



GALERU BUSHTUCKER ORCHARD

MASTERPLAN REPORT

-26.447248, 152.889632

LS000208 • 24 November 2023 • Version B

Document Register

Project	SevGen Masterplan
Report Title	DRAFT Masterplan Report
Version	[B]
Project Code	LS00208
Prepared for	Sevgen
Author	LatStudios

Issue	Date	Approved	Details
A	14/7/23	DT	DRAFT
B	24/11/23	DT	DRAFT

This is a live document intended to be updated into the future as new information comes to hand.

It has been prepared solely for the benefit of SevGen and is issued in confidence for the purposes only for which it is supplied. Unauthorised use of this document in any form whatsoever is prohibited. No liability is accepted by LatStudios, any employee, contractor, or sub-consultant of this company with respect to its use by any other person. This disclaimer shall apply notwithstanding that the document may be made available to other persons.



Key Terms

Indigenous - refers to Aboriginal and Torres Strait Islander peoples and is applied in situations for brevity



A photograph of a forest with sunlight filtering through the trees. The trees are tall and thin, with a dense canopy. The ground is covered in fallen leaves and small plants. The lighting is soft and natural, creating a serene atmosphere.

ACKNOWLEDGMENT OF COUNTRY

*SevGen Indigenous Corporation
would like to acknowledge and pay
our respects to all First Peoples who
have walked this sacred land. We
would also like to acknowledge the
elders past, present and emerging,
whose land we walk on in our journey
and ask for your blessings.*

01

THE SEVGEN STORY

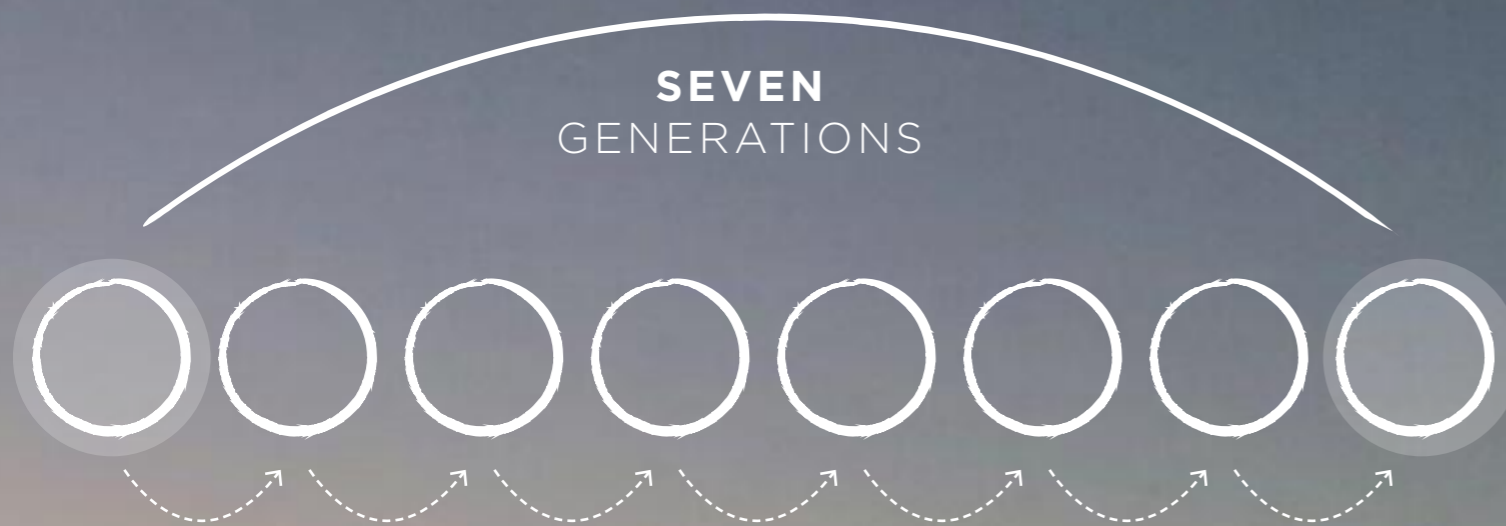
SevGen is short for Seven Generations which is an Indigenous way of thinking that says our actions of today, will affect seven generations into the future

The underpinning principle of SevGen's social enterprise call us to be more conscious about our actions while drawing on the wisdoms of seven generation ancestors.

With an intergenerational story of not being served well by the school system, founder Terri Waller believed there was a need for new approaches and methodologies that would bring connection and relevance to Indigenous students.

She worked at various schools and training organisations on the Sunshine Coast before establishing the SevGen Indigenous Corporation in 2012. SevGen caters equally for multiple intelligences and different learning styles and works within a unique 3E model to help fund and sustain its relationship and location based character that is being described as an authentic Australian pedagogy.

SevGen is a community development concept. It has a range of social enterprises all of which have learning at the core for those of us who have been 'dis'sed: disconnected, disenfranchised, disempowered people who are seeking a deeper meaning and sense of purpose in their lives.



SEVGEN'S '3E MODEL'

Enterprise, Education, Entrepreneurship

SevGen has a dual mission, to honour the full true and creative self and to celebrate, validate and reinvigorate Indigenous ways of being for the collective benefit of all.

The vehicle for this mission is the social enterprise of SevGen which utilises the 3E model to create a sustainable business that will grow and nurture community now and for future generations.

The core tenets of the 3E model are:
Enterprise, Education and Entrepreneurship.

Enterprise

A core tenet of the business is to not rely on funding but rather astutely create enterprise projects which attract key stakeholders who are prepared to donate or invest their time and money to support social enterprise ventures. This is future-focused approach ensure Sevgen will continue to make an impact for many generations to come.

Education

SevGen believes that there is a different way to be educated or 'grown up'. We have created a loving, living, laughing, listening and learning place where we experience enjoyable, effortless learning. Our people, through being grown up in these supportive conditions, are called SEECERS: Socially, Emotionally, Ecologically, Culturally, Creatively, Educationally, Solid individuals.

Entrepreneurship

After holding the space to find your passion, you will be given the space to practise mastery of it and supported to ignite your passion into cultural and creative entrepreneurial ventures. SevGen will support up to 7 individuals or community projects until they are ready to become a new social enterprise in their own right. It is expected that these new social enterprises will pay-it-forward and support SevGen so that our charitable work can continue.

SOCIAL ENTERPRISE



ENTERPRISE



EDUCATION



ENTREPRENEURSHIP



COMMUNITY

02

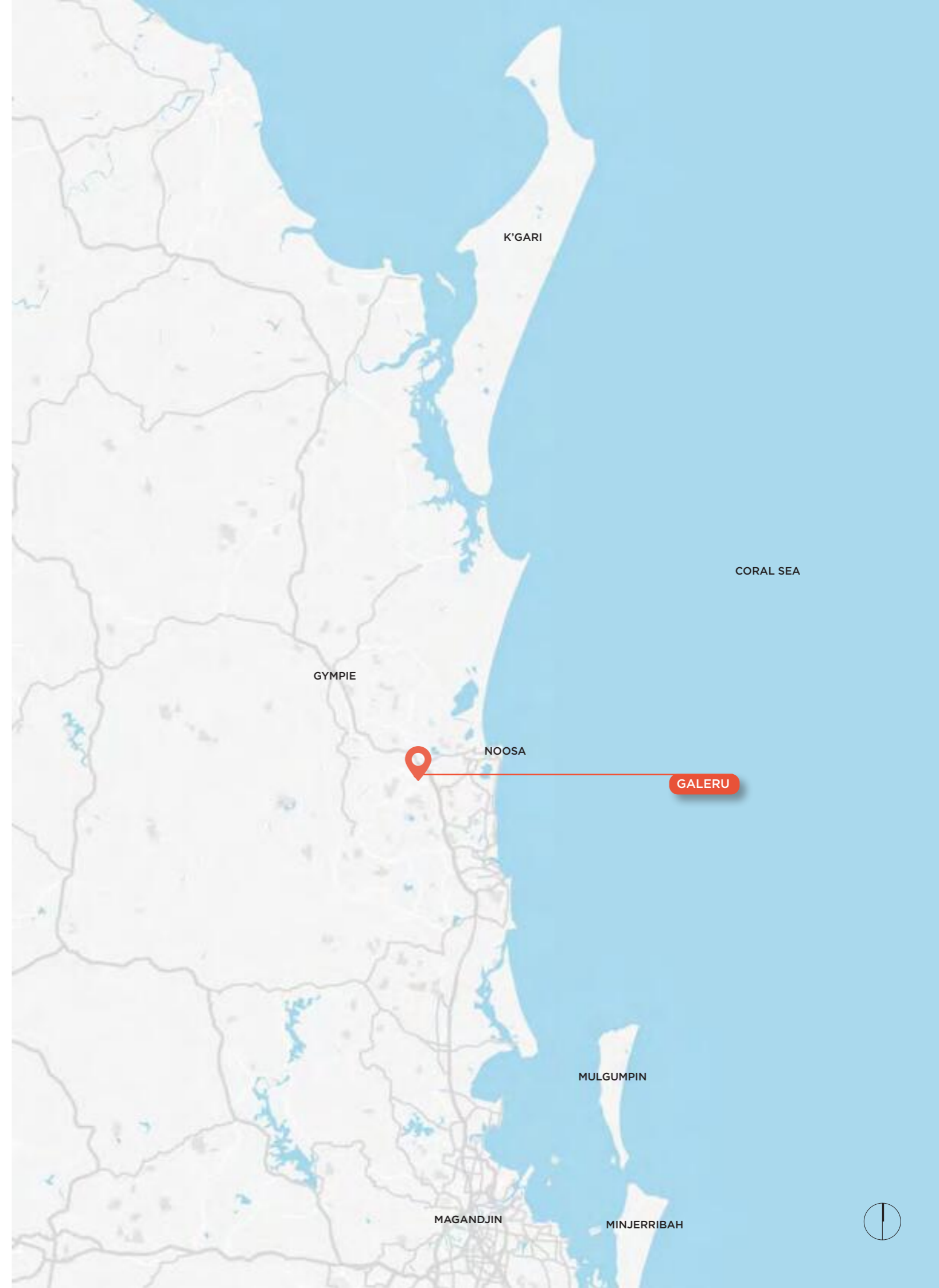
GALERU NURSERY

A visionary proposal for a Bushtucker orchard property in the Sunshine Coast hinterland

In June 2021 Sevgen developed a proposal to acquire a native fruit orchard property in Cooroy, Queensland. Shortly after the SevGen's vision became reality with the purchase and creation of Galeru: Forever Fruits native nursery and farm.

Continuing and supporting the mission of SevGen, the nursery aims to:

- Grow and support an Indigenous led bushtucker industry
- Create a seed bank for regenerative agriculture
- Connect with 200 buyers within 200miles for the food miles sustainability challenge
- Implement syntropic farming for healthful yield
- Support community led development for an healthy community
- Support the Extinction Rebellion for early intervention into endangered planet through increased biodiversity and native species
- Create opportunities for justice, health, education and employment reinvestment for innovative solutions
- Implement futures thinking for permaculture
- Continue operation as a social enterprise
- Improve community health through the use and access to native fruits, nuts and aromatic superfoods
- Share culture and educate



WORKSHOP ON COUNTRY

Orchard walk, team workshop and visioning session

The material contained in this document looks to gather together the Galeru team's vision for this beautiful property, as discussed at a workshop with the LatStudios team on site on April 21st, 2023.





THE PLACE

Nestled in the hinterland behind Noosa and just up the road from Cooroy the SevGen native nursery and farm enjoys sweeping hinterland views and plentiful cooling breezes.



Sentinel bunya pine overlooking the lower dam and site





Native fruit tree orchard and collection netting



Larger dam and surrounding nursery



Deck from the existing house looking towards Mt Cooroy



Event space and clearing within the xx trees



View from the top of the property towards Mt Cooroy



Native fruits





03

MASTERPLAN

MULTI-FUNCTIONAL ZONES

EVENT HUB

Open, Active, Community, Gathering, Spectator Space, Off-street Car Parking, Kitchen, Long table dining, Dance Floor!

LAKESIDE

Event Hub overflow, water activities, event deck, orchard views, stage

THE QUIET PLACE

Private, Safe, Welcoming, Bathing, Bunya Lookout

SEVGEN WORK HUB

Retail Nursery, Seed Bank, Workplace, Riberry Patch, Leaf and Berry Processing, New Donga, Bamboo!

AMPHITHEATRE

Special Events, Teaching, Ceremony

RETREAT

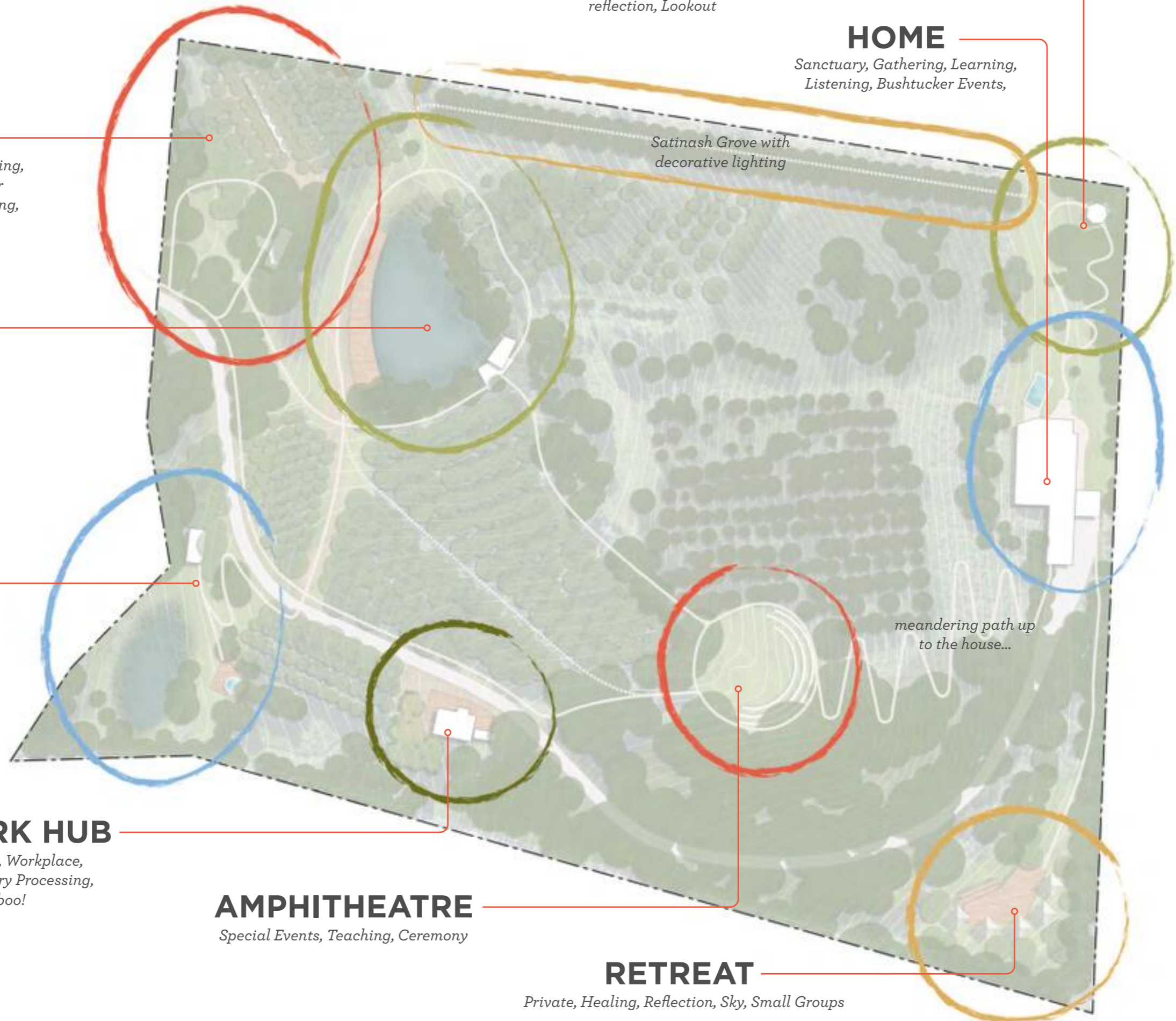
Private, Healing, Reflection, Sky, Small Groups

HEALING GARDEN

Learning, Cleansing, Inner reflection, Lookout

HOME

Sanctuary, Gathering, Learning, Listening, Bushtucker Events,



A MASTERPLAN FOR GALERU

HEALING GARDEN

Learning, Cleansing, Inner reflection, Lookout

HOME

Sanctuary, Gathering, Learning, Listening, Bushtucker Events,

EVENT HUB

Open, Active, Community, Gathering, Spectator Space, Off-street Car Parking, Kitchen, Long table dining, Dance Floor!

Satinash Grove with decorative lighting

LAKESIDE

Event Hub overflow, water activities, event deck, orchard views, stage

THE QUIET PLACE

Private, Safe, Welcoming, Bathing, Bunya Lookout

Musa Vale Road

meandering path up to the house...

SEVGEN WORK HUB

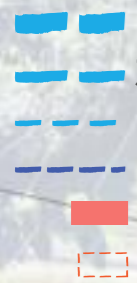
Retail Nursery, Seed Bank, Workplace, Riberry Patch, Leaf and Berry Processing, New Donga, Bamboo!

AMPHITHEATRE

Special Events, Teaching, Ceremony

RETREAT

Private, Healing, Reflection, Sky, Small Groups



EVENT HUB + LAKESIDE

An open, active community gathering accessible from the front gate at the bottom of the driveway.

Long table dining

Dance Floor!

Event Hub access and car parking

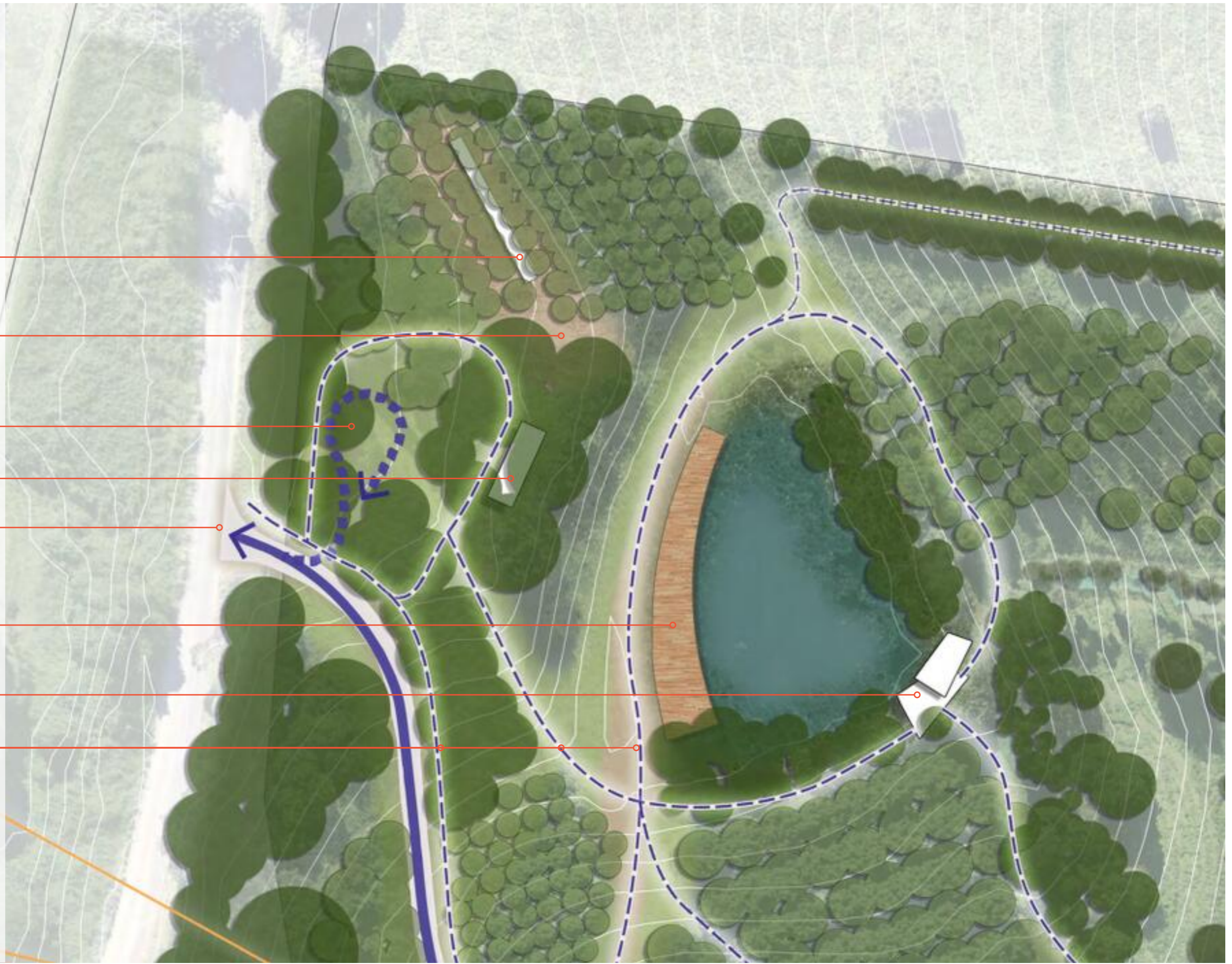
Kitchen

Entry Upgrade

Water activities launch from the wide, multi-use event deck.

Stage looking back across the lake

Pedestrian path system linking up activity areasthrough the orchard





HEALING GARDEN + HOME

At the top of the hill, with sweeping, healing views across the valley, sits a contemporary home among a rich, detailed healing garden.

Lookout

*Healing Garden Loop:
A place for learning, cleansing and inner reflection. The softly lit setting for Bush tucker events catered from the house.*

*Home:
A sanctuary for gatherings large and small*

THE QUIET PLACE + SEVGEN WORK HUB

*The Quiet Place:
A private, safe, welcoming
place for personal healing.*

*Path network linking up the
hill and across to other activity
areas.*

Lake Bathing

Bunya Lookout

*SevGen Work Hub:
A retail nursery, seed bank +
workplace for leaf and berry
processing for commercial use.
New 'Donga' to be added for
additional storage.*



RETREAT + AMPHI- THEATRE



Drop-off

Meandering path up to the house.

*Amphitheater:
A special place set into the hillside for events, teaching and ceremony*

Vehicular access

Pedestrian path between house and Retreat

*Retreat:
Private villas for small groups in a secluded, elevated position for personal healing, reflection and sky connection.*



SerGen