



Queering Permaculture

& what that means for a
decolonised future



PermaQueer

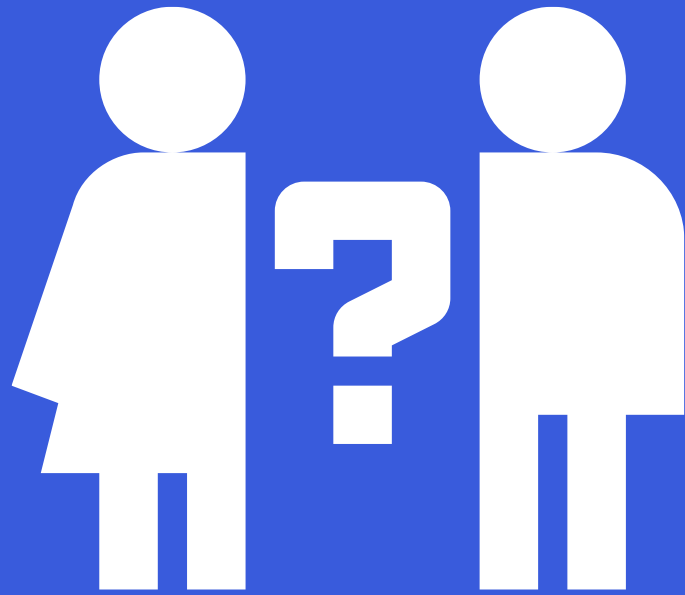
Who and what are we?



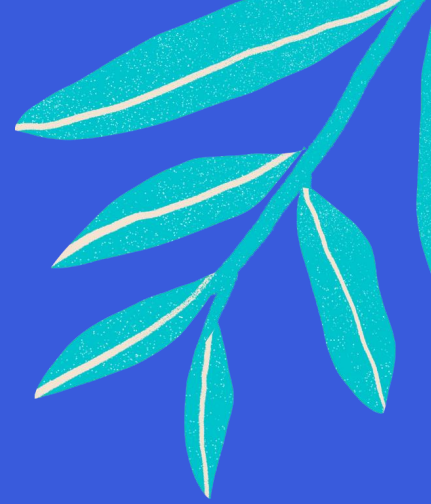
Safe & Brave Space Agreement

What does a safe & brave space
agreement mean?



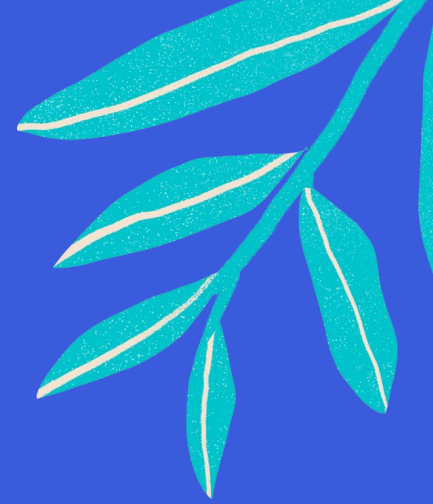


Pronoun Lowdown





Gender vs. Sex



Gender Romantic Sexual Minorities



Intersex

Someone born with variations in sex characteristics that do not fit the typical definitions for male or female bodies.



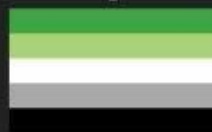
Transgender

Someone whose gender identity differs from their sex assigned at birth.



Polyamorous

Someone with the capability, or desire to be in a relationship with more than one person at once.



Aromantic

Someone who generally does not experience romantic attraction.



Asexual

Someone who generally does not experience sexual attraction.



Homosexual

Someone who has romantic or sexual attraction to members of the same sex or gender.



Bisexual

Someone who has romantic or sexual attraction to members of two or more sexes or genders.



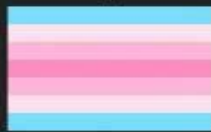
Transmasc

Someone who was assigned female at birth but generally identifies as a man.



Non-binary

Someone who does not fall strictly under the gender binary of male or female.



Transfemme

Someone who was assigned male at birth but generally identifies as a woman.



Aroace

Someone who is aromantic and asexual.



Demisexual

Someone who does not experience sexual attraction to another person unless they have formed an emotional connection with that person.



Sapphic

A woman who has romantic or sexual attraction to other women.



Achillean

A man who has romantic or sexual attraction to other men.



Pansexual

Someone who has sexual or romantic attraction to people regardless of their sex or gender.



Genderfluid

Someone whose gender identity varies overtime.



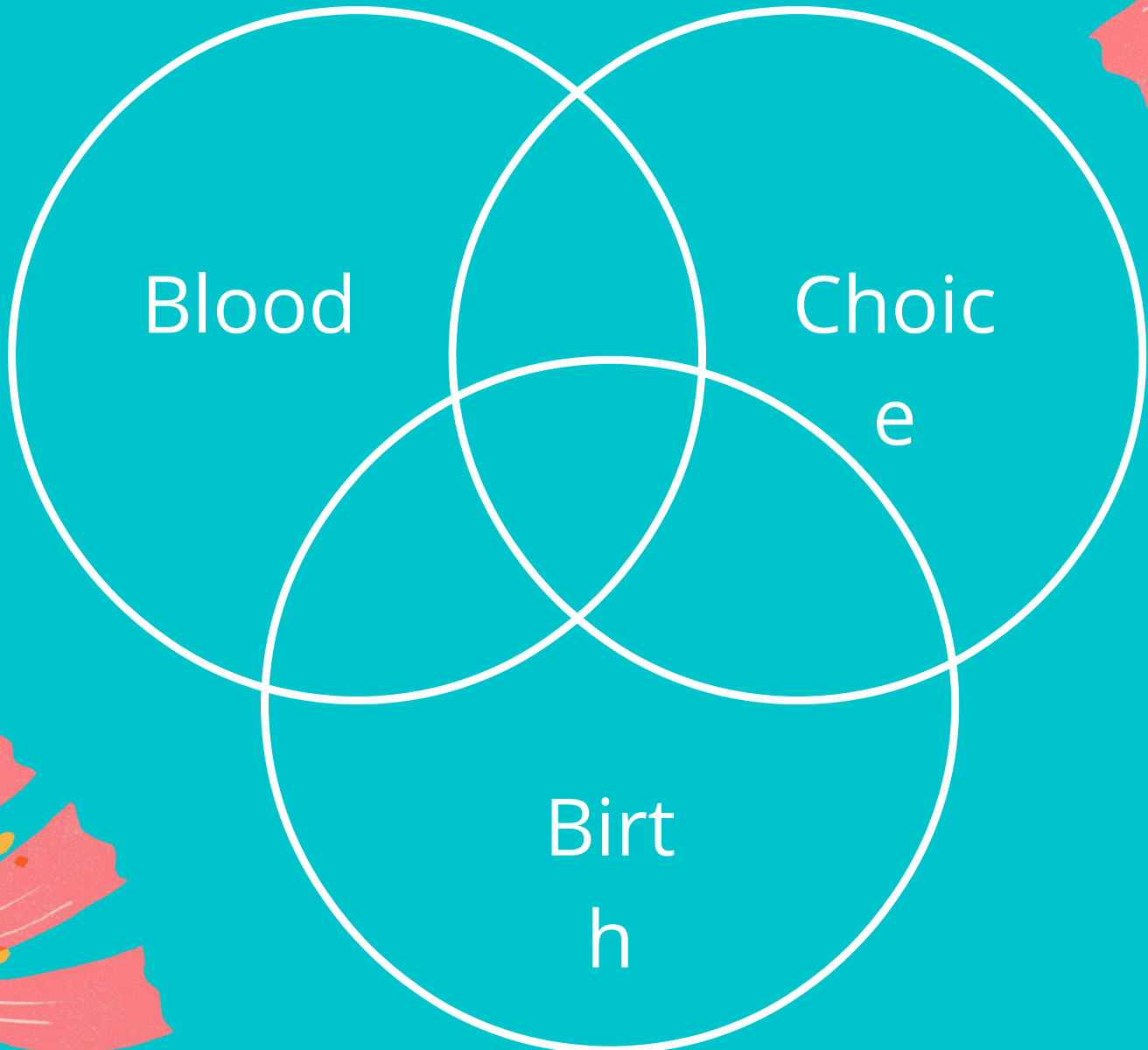
Lesbian

A woman who has romantic or sexual attraction to exclusively other women.



Vincian/Gay

A man who has romantic or sexual attraction to exclusively other men.



Blood

Choice

Birth



Identify with us

Gender:

Sexuality:

Blood:

Birth:

Choice:



Queer Theory



Queer Theory

- Personal
- Contextual
- Relational
- Cultural

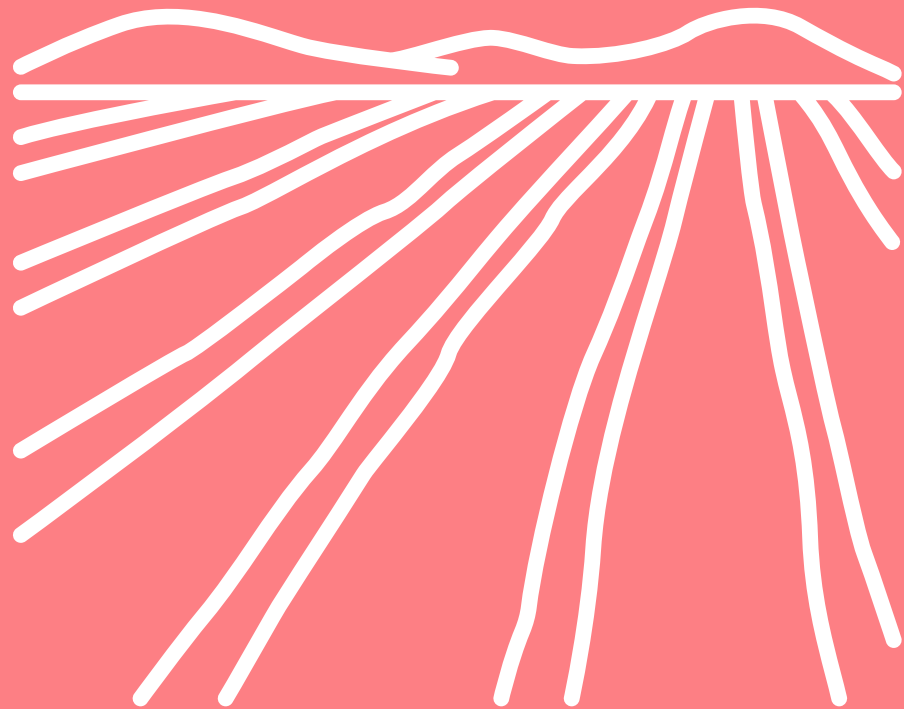


Queerness:

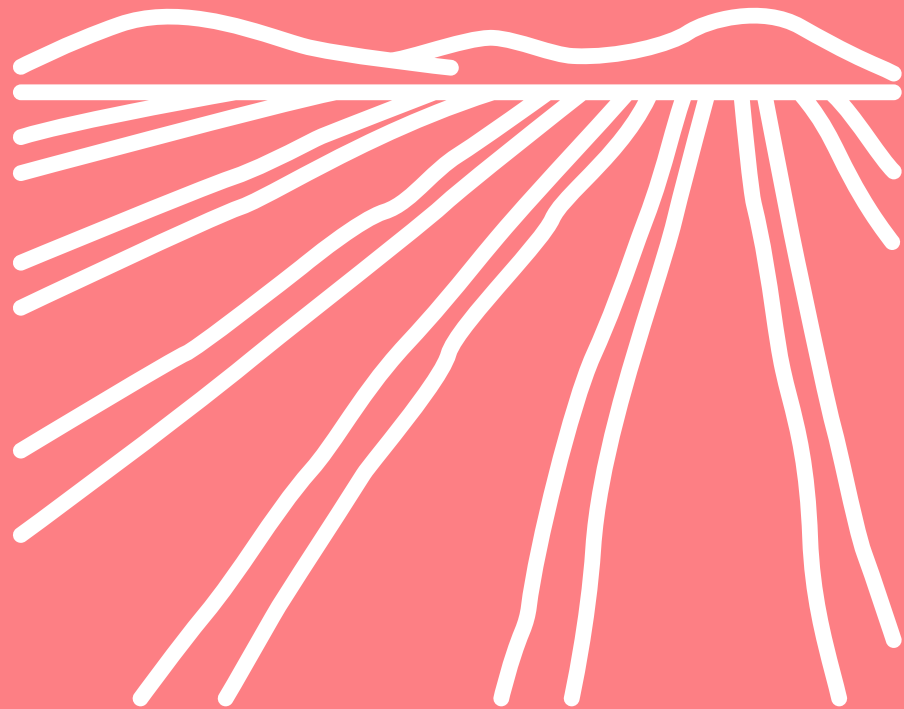
- Edge
- Complexity
- Marginal
- Diversity
- Resilience

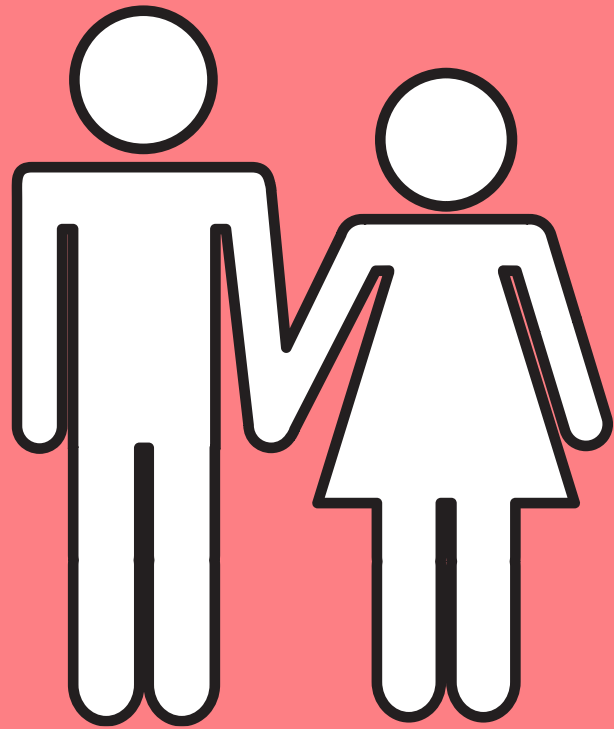


Monocultures & Binaries



Social Monocultures & Binaries





What
are
social
Norms?





What are
binaries?



The image features a solid pink background. On the left side, there are stylized leaves in two colors: blue and yellow. The yellow leaves are larger and have pinkish-purple veins, while the blue leaves are smaller and have white veins. The leaves are arranged in a vertical column, with some overlapping. The main title is centered on the right side of the page.

Entropic & Syntropic Systems

Pattern recognition inside and
outside the garden

Macro Societal Traumas



Colonisation

White
Supremacy

Capitalism

Patriarchy

Ableism



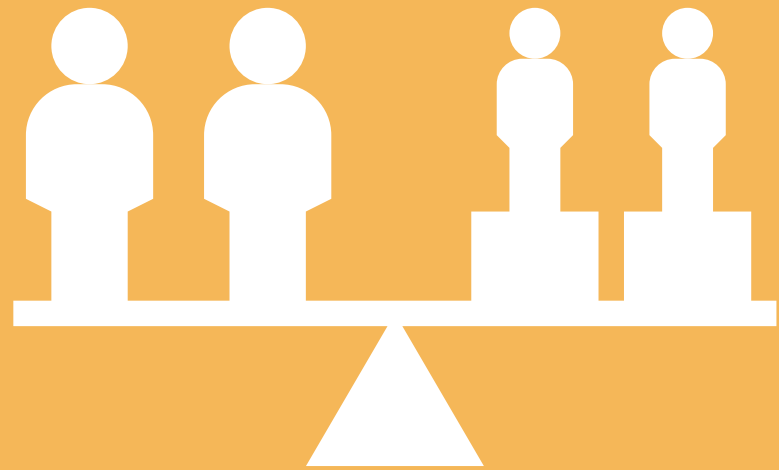
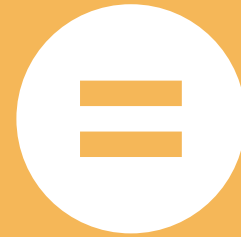


Trauma informed design

Transformative justice & community accountability



Equality vs.
Equity vs.
liberation



The punitive
justice binary



Cancel culture binary






Identity Queering

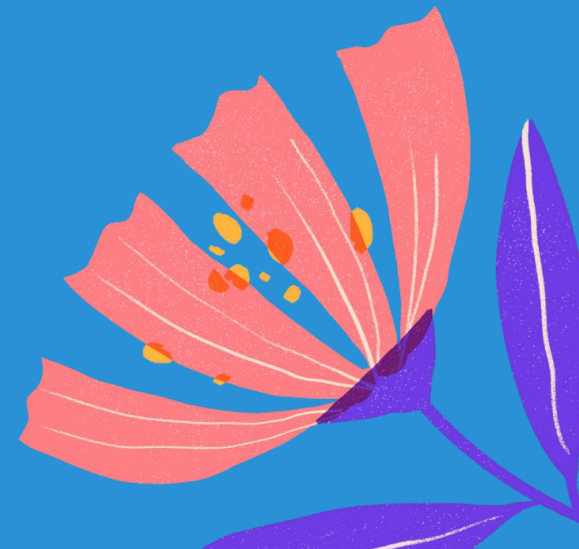
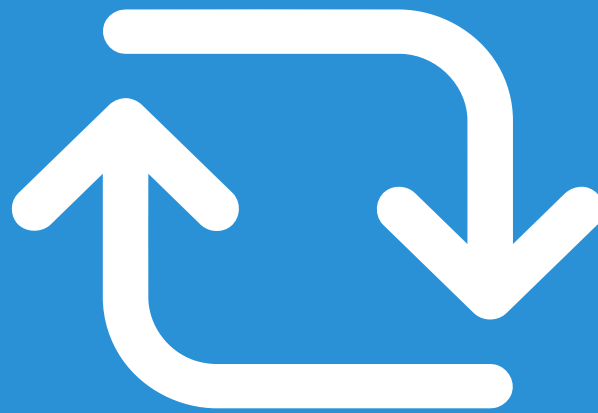
Noun - Verb
Activity

Queering as a verb





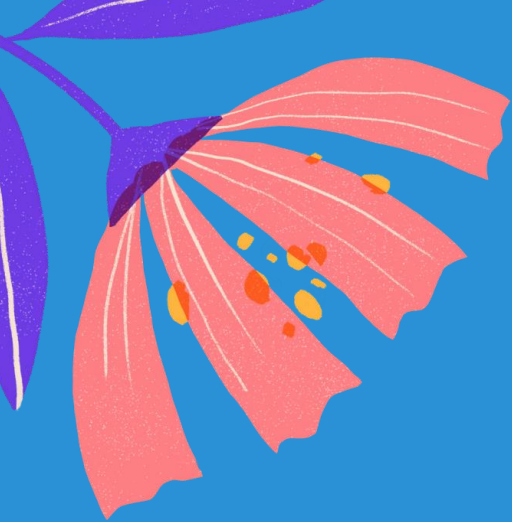
The symbiosis of queerness & permaculture



Benefits to Permaculture



Benefits to queer culture





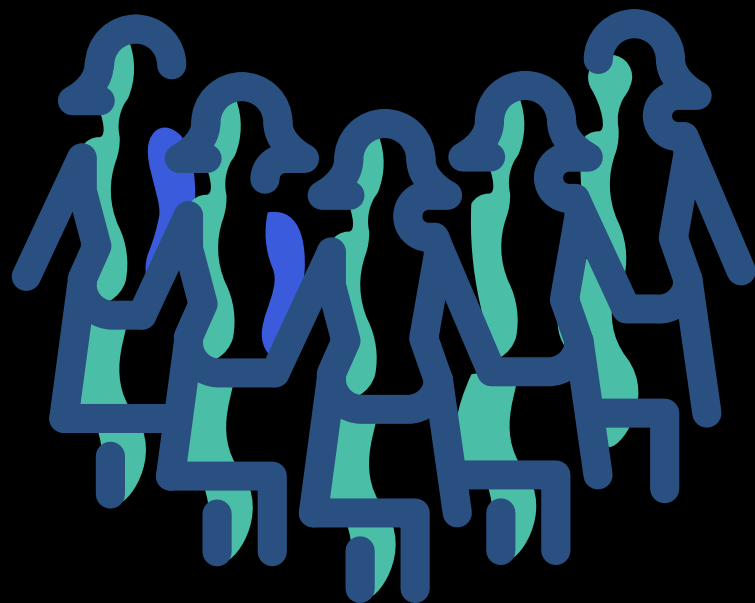
How do we integrate
queer theory & people
into permaculture?

Question Time!





Thank You



Special thanks to the powerful
wahines (women) who paved
the way for us to be here