

First Flush system for fresh water collection



Why use a first flush system?

This is why!

Wind blown debris in gutter



Excessive debris in your water tank can cause these problems:

- Clogged water pumps, pipes or filters
- Discoloured water
- Water taste
- Leaking taps due to debris under seals

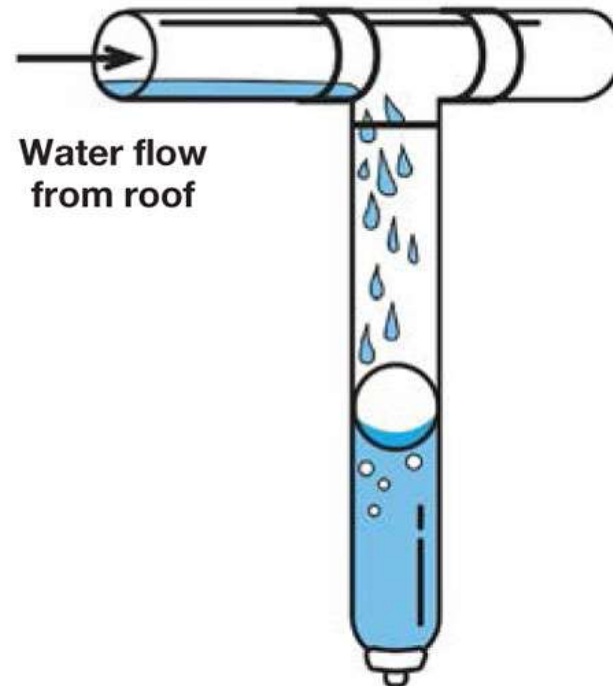
How do we reduce this problem?

- Time to do things smarter!
- The first amount of water from the roof is the dirtiest.
- So we divert the first 10 + Litres away from the tank
- Use a simple low tech system to do this
- Be innovative!

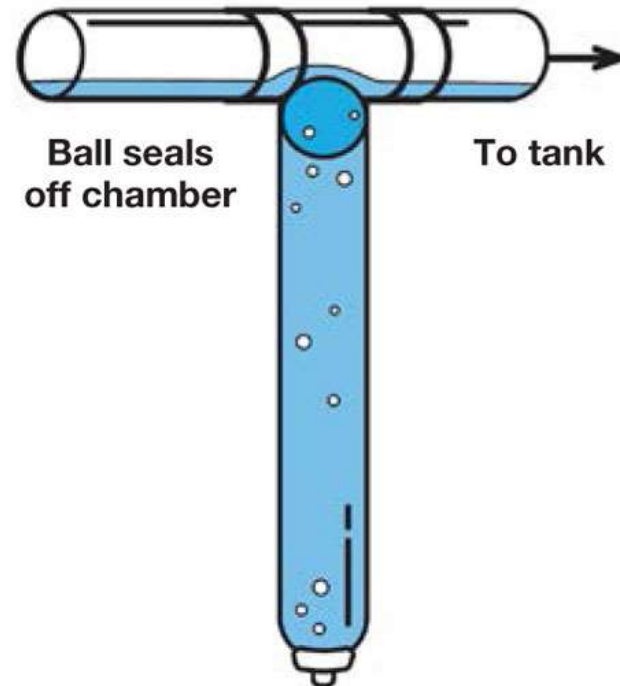
Basic Principle

Function of a First-Flush System

The first flush of contaminated water is diverted into chamber

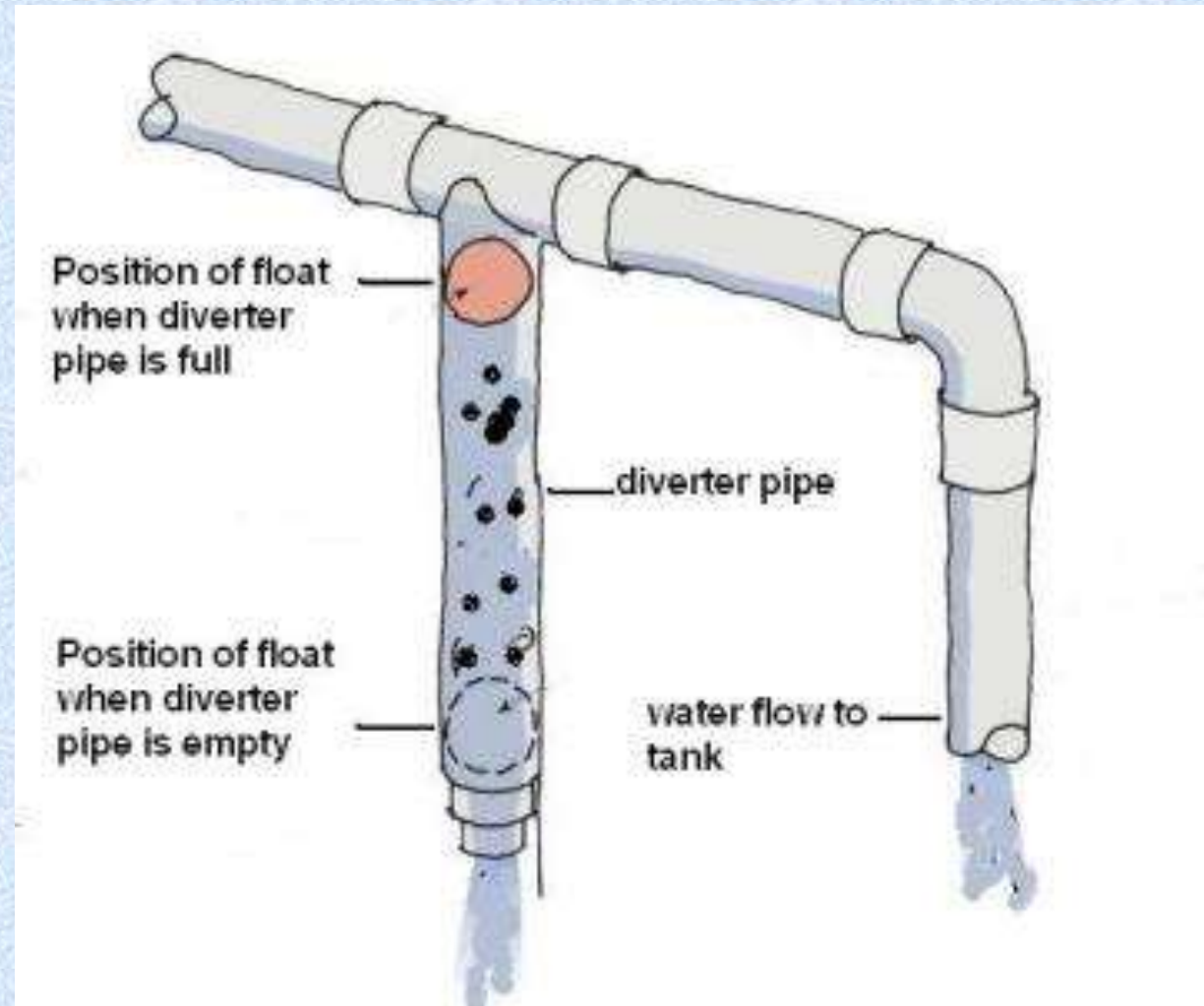


Once the chamber is full, fresh water flows to tank

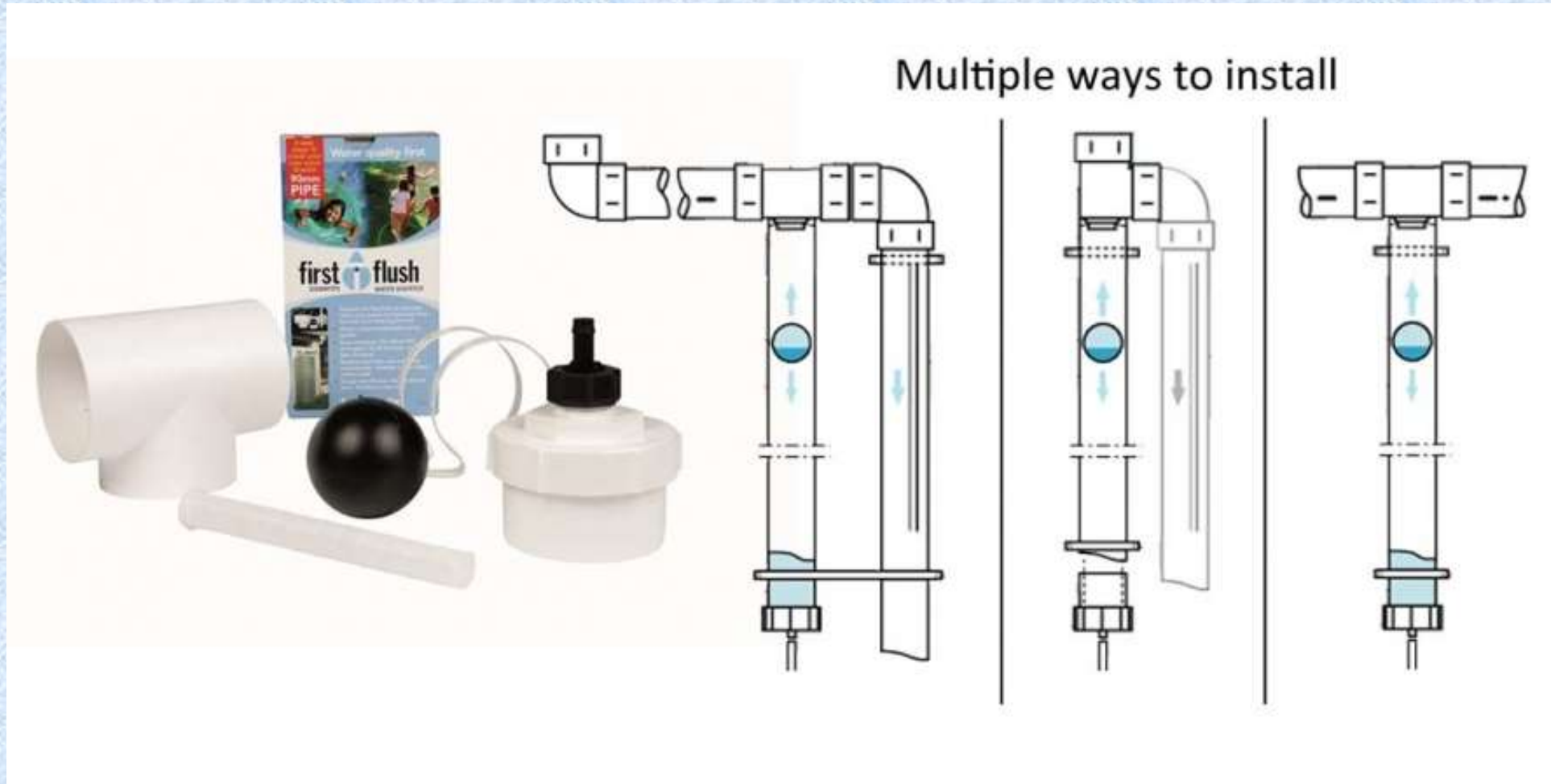


Courtesy Innovative Water Solutions LLC (2)

Basic Principle



Variations of installation



Example of simple first flush system



Google images

Water tank at Yandina Community Garden



My Rainwater Collection System

- Living in town the 7500L tank 'officially' supplies:
- Two toilets and the laundry
- Garden irrigation
- "Non Potable" sign above the outside water tap as per Council Regulations
- Use easy to assemble PVC pipes and attachments
- Piping to water tank completely legal for DIY

My water tank



Roof North end pipe to water tank



Roof South end pipe to water tank



Combination of fittings



Adapter for gutter connection



End of collection tube

